

SAMPLE QUESTION PAPER - 4

English Core (301)

Class XII (2024-25)

Time Allowed: 3 hours

Maximum Marks: 80

General Instructions:

Read the following instructions very carefully and strictly follow them:

1. This question paper has **13** questions. **All** questions are **compulsory**.
2. This question paper contains **three** sections - Section A : **Reading Skills**, Section B : **Creative Writing Skills** and Section C : **Literature**.
3. Attempt all questions based on specific instructions for each part. Write the correct question number and part thereof in your answer sheet.
4. Separate instructions are given with each question/part, wherever necessary.
5. Adhere to the prescribed word limit while answering the questions.

SECTION A – READING SKILLS

1. Read the passage given below:

[12]

1. I know many friends of mine who drink coffee regularly but do not know that coffee exists in different forms other than instant coffee. There are many who swear by Flora café Classic or Coco Gold, which they consider premium coffee. I may sound offensive but instant coffee is not the only way; in fact it's a very bad way of making coffee! Instant coffee cannot match up to brewed coffee's flavour nor does it have Arabica beans. It uses Robusta beans that are lower in flavour. Don't know the difference?! Read on ...
2. That plant might be a genius! It created a chemical that would keep pests away. Fortunately for us and unfortunately for the plant - that plan did not work the way it was intended to. The chemical might have averted a few pest attacks, but attracted a far greater threat human beings. The plant I am talking about is coffee and the chemical is caffeine.
3. To begin from the beginning - coffee is from a more mature part of the tree - the seed - unlike other stimulants. The ripe berry is picked and de-pulped leaving us with a seed called 'green bean' or 'green coffee'. Green bean is uncharacteristically bland with a taste nowhere close to that of coffee, but it is valued for its higher antioxidant levels.



4. It's an interesting phenomenon to see how this bland green bean turns to a flavourful coffee bean. The coffee bean is a seed and like any other seed is rich in proteins, fats and all necessary ingredients for giving birth to a new plant. When exposed to heat, the fats and carbohydrates in the bean turn into essential oils, which give the characteristic taste and aroma to the coffee bean. The degree of roasting depends on the need or purpose of use.
5. These beans are ground so that the surface area of the bean is increased, which makes extraction easier. The bean can be ground or crushed but making the particles uniform will ensure equal extraction, or else the smaller particle will get over-extracted and the larger one under-extracted. Hence, the burr grinder is used to ensure that the coffee bean gets ground in a uniform way in which all particles are of similar sizes.
6. Does under-extraction give a lighter coffee and over-extraction a stronger one? No. For a lighter or stronger coffee less or more coffee powder has to be used. Why? Under extraction will not get all the flavours of the coffee as the water runs too quickly. It will not get what you want - it will taste sour. Over-extraction will bring out all unnecessary flavours rendering the taste bitter.

Answer the following questions, based on the above passage :

- i. Complete the sentence by choosing an appropriate option. (1)
The author complained that his friends _____.
 - a. consumed only Flora classics.
 - b. were not aware of different forms of coffee.
 - c. were severely addicted to drinking coffee.
 - d. considered Coco Gold as premium coffee.
- ii. Comment on the writer's reference to the unique feature of the coffee plant. (paragraph 2) (1)
- iii. List the reasons why the author refers to humans as a **great threat to coffee** plants. (2)
- iv. Select an option that conveys the same meaning as **energiser** from words used in paragraph 3. (1)
 - a. bland
 - b. mature
 - c. antioxidant
 - d. stimulants

- v. Complete the given sentence with an appropriate inference with respect to the following: **(1)**
Fats and carbohydrates turn into essential oils leading to _____.
- vi. Comment on the writer's reference to the interesting phenomenon in paragraph 4. **(1)**
- vii. Over-extraction does not give a stronger coffee. Based on your understanding of paragraph 6, list one method to get stronger coffee. **(1)**
- viii. The writer would not agree with the given statements based on paragraph five EXCEPT **(1)**
- a. The burr grinder grinds coffee beans uniformly.
 - b. Less surface area makes extraction easier.
 - c. Grinding gives a stronger aroma.
 - d. Good coffee is a mix of smaller and bigger particles.
- ix. Why is it fair to say that the right degree of extraction of coffee is important? **(1)**
- x. What unintended consequence did the coffee plant's production of caffeine have? **(1)**

2. **Read the following passage carefully :**

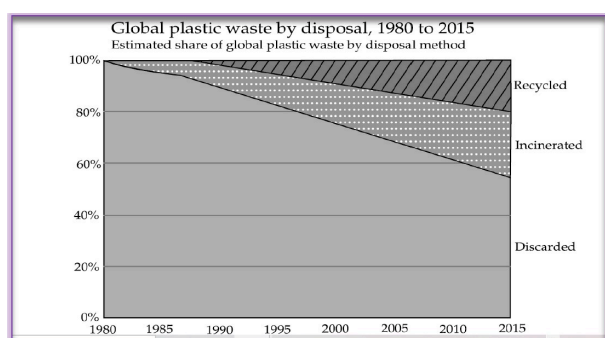
[10]

1. When plastic waste is burnt, a complex weave of toxic chemicals is released. Breaking down Poly Vinyl Chloride (PVC) used for packaging, toys and coating electrical wires. It produces dioxin, organochlorine which belongs to the family of Persistent Organic Pollutants (POPs). A recent Dioxin Assessment Report brought out by the United States Environment Protection Agency (USEPA) says the risk of getting cancer from dioxin is ten times higher than reported by the agency in 1994.
2. The Delhi government is giving the green signal to a gasification project which will convert garbage into energy without removing plastic waste. This way, no air pollution will be caused and the ash produced can be used as manure. The project built with Australian assistance will cost 200 crore. It will generate 25 megawatts of power and gobble 1,000 tons of garbage every day.
3. Technologies like gasification are a form of incineration. Incineration merely transfers hazardous waste from a solid form to air, water and ash. Toxins produced during incineration include acidic gases, heavy metals as well as dioxins and furans.

4. Municipal solid waste contains a mix of plastics. Breaking down this waste emits hydrochloric acid which attacks the respiratory system, skin and eyes, resulting in coughing, vomiting and nausea. Polyethylene generates volatile compounds like formaldehyde and acetaldehyde, both suspected carcinogenic. Breathing styrene from polystyrene can cause leukemia. Polyurethane is associated with asthma. Dioxin released by PVC is a powerful hormone disrupter and causes birth defects and reproductive problems.

5. Even the best run incinerators in the world have to deal with stringent norms. In Germany, air pollution devices accounted for two-thirds the cost of incineration. Despite such efforts, the European Dioxin Inventory noted that the input of dioxin into the atmosphere was the highest from incineration.

6. In the chart, we see the share of global plastic waste that is discarded, recycled or incinerated from 1980 through to 2015. Prior to 1980, recycling and incineration of plastic was negligible; 100 percent was therefore discarded. From 1980 for incineration and 1990 for recycling, rates increased on average by about 0.7 percent per year. In 2015, an estimated 55 percent of global plastic waste was discarded, 25 percent was incinerated and 20 percent recycled.



7. Indian garbage has a low calorific content of about 800 kg and it has high moisture and requires additional fuel to burn. Toxics link calculates that the electricity generated from such technology will cost between 5 and 7 per unit, which is six times higher than conventional energy. India has chosen a dioxin preventive route and burning of chlorinated plastics is prohibited under Municipal Solid Waste and Biomedical Rules. Nearly 80 percent of Indian garbage is recyclable or compostable.

Answer the following questions, based on the above passage :

- i. Does the following statement agree with the information given in paragraph 6?
(1)

Discarded plastic waste produces greenhouse gas emissions when exposed to sunlight in both air and water if it is not recycled or disposed of in a controlled manner.

Select from the following:

True - if the statement agrees with the information

False - if the statement contradicts the information

Not Given - if there is no information on this

ii. Do you think that garbage from India has a high calorific content? Support your answer with reference to the passage. **(2)**

iii. Based on the given graphical representation of data in the passage, choose the option that lists the statements that are TRUE. **(1)**

1. In the year 2015, the incinerated plastic waste disposal was 80%.

2. In the year 1980, the share of discarded plastic waste was 100%.

3. Discarded plastic waste was 60% in the year 2010.

4. Recycled plastic waste in the year 2000 was less than 70%.

Choose the correct option:

(i) 1,2 and 3

(ii) 2 and 3

(iii) 1 and 4

(iv) 1,3 and 4

iv. Complete the sentence based on the following statement. **(1)**

Burning plastic waste is harmful and causes cancer. We can say this because

_____.

v. Which statements are NOT TRUE according to the passage? **(1)**

1. India has adopted a preventive measure under which burning of chlorinated plastics is prohibited.

2. USEPA says that the risk of getting cancer from dioxin is hundred times higher than reported by the agency in 1994.

3. Incineration merely transfers hazardous waste from a solid form to air, water and ash.

4. Hydrochloric acid attacks the digestive system, nose and eyes which results in diabetes and nausea.

a. 1 and 3

b. 3 and 4

c. 1 and 2

d. 2 and 4

- vi. The Delhi government is giving the green signal to a gasification project that will convert garbage into energy without removing plastic waste. Explain what is the purpose of the waste-to-energy project. **(2)**
- vii. Complete the given sentence by selecting the most appropriate option. **(1)**
The respiratory system, skin, and eyes are affected by _____.
- a. Polyethylene
 - b. Hydrochloric acid
 - c. Polystyrene
 - d. Dioxin
- viii. Complete the sentence appropriately with one/two words. **(1)**
Dioxin disrupts hormones, causes birth defects and _____.

SECTION B – CREATIVE WRITING SKILLS

3. You are Rahul/Rashmi. As President of the Literary Club of your school you have organized an inter-school debate competition on the occasion of the Silver Jubilee celebrations of your school. Write a notice in about 50 words, informing the students of your school about the competition. **[4]**

OR

You are the Anuj/Anu, Secretary of Saket Kunj, Saket, Navi Mumbai, Resident Welfare Association. Write a notice in 50 words to be circulated to all the residents informing them that there will be no water supply in your colony for two days due to necessary repair and maintenance work. Mention dates, and the timings that tankers will be available in the R.W.A. premises.

4. You are Sachin Bansal, the Head Boy of Springdales Public School, Gurgaon. Your school is holding an inter-school T-20 championship from 2 Oct. to 8 Oct 2018. Write a formal invitation to Sh. B.S. Bedi, the legendary cricketer, to inaugurate the championship on 2 Oct. 2018 at 10 a.m. at your school grounds. **[4]**


OR

The outgoing batch of Class XII is going on a picnic to the Garden of Five Senses. Send an informal invitation letter in 50 words to your classmates. You are Rita/Ram, the Head Girl/Head Boy of Lotus Public School. Mention day, date, time and venue.


5. Along with air and water pollution, our cities are also under an attack of noise pollution. Marriage processions, DJs during wedding receptions loud music from neighbourhood flats etc., are all sources of noise which is not good for the old, the **[5]**




ailing and students. Write a letter in 120-150 words to the Editor of a local newspaper describing the problem and making a request to the concerned authorities to solve it. You are Karan/Karuna, M 114, Mall Road, Delhi.



IMPACTS SLEEP HABITS
Can disturb sleep patterns, making it difficult to fall or stay asleep.



HINDERS CHILD DEVELOPMENT
Can affect children's hearing and lead to trouble concentrating.



CAN CAUSE PSYCHOLOGICAL ISSUES
Found to increase stress and anxiety in both children and adults.



OR

JB Academy, Ayodhya urgently requires a post-graduate teacher to teach Political Science for which they placed an advertisement in 'The Bhilai Express'. You are Sanjay/Sanjana Sharma from 21, Vasant Marg, Bhilai. Draft a letter including a CV, applying for the advertised post (120-150 words)

VACANCIES

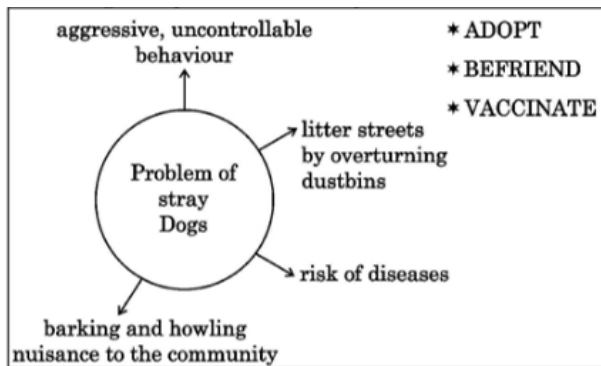
JB Academy | Mob: 9953222222 Email: jba@jba.ac.in

PGT (Political Science) Salary - Rs. 46,500/- pm
Qualification : Masters Degree in Political Science with B.Ed.
Counselor : Salary Rs. 46,500/- pm
Qualification : PG in Psychology or PG in Child Development or Graduation in Psychology with Diploma in Career guidance and counseling.

- Candidates with student friendly pedagogy will be preferred.
- Candidates with fluency in written and spoken English will be preferred.
- Only shortlisted candidates will be called for test/interview.
- Outstation candidates will be paid one way II Sleeper/Bus fare

JBNS Society
Civil Lines, Distt Ayodhya (U.P.), Mob: 9953222222

6. Draft an article in 120-150 words to be published in a prominent journal on the problem of stray dogs in your colony. Give suggestions to overcome this menace. You are Prerna/Prashant. Use the given cues along with your ideas to compose the article: [5]



OR

You are Roshan/Rohini, School Pupil Leader of Meerut Public School, Meerut. Your school joined a campaign organised by various agencies of your city to create awareness among people to conserve water. Write a report in 100-125 words highlighting the activities such as rain water harvesting, etc.

SECTION C - LITERATURE

7. Read the following extract and answer the questions that follow: [6]

I saw my mother,
beside me,
doze, open mouthed, her face
ashen like that
of a corpse and realised with
pain
that she was as old as she
looked but soon
put that thought away, and
looked out at Young
Trees sprinting, the merry children spilling
out of their homes,

- Identify the phrase that indicates youthful energy.
- Which thought is the poet trying to put away?
 - missing the flight
 - fear of losing her mother
 - leaving her mother behind

- d. reaching Cochin
- iii. The poet's mother is described as **open mouthed** because _____.
- a. she is curious
 - b. she is surprised
 - c. she was dead
 - d. she was dozing
- iv. Complete the following analogy :
- children spilling : metaphor : : _____ : personification
- v. The sight of the trees and the children helped the poet _____.
- vi. In the given extract, the phrase **realised with pain** indicates the poet's
- a. anxiety
 - b. desperation
 - c. troubled past
 - d. ill-health

OR

Read the following text carefully and answer the questions that follow:

The little old house was out with a little new shed
in front at the edge of the road where the traffic sped.
A road side stand that too pathetically pled
It would not be fair to say for a dole of bread.
But for some of the money, the cash, whose flow supports
The flower of cities from sinking and withering faint. (A Roadside Stand)

- i. Which of the following expressions has the same literary device as used in (1)
"A roadside stand that too pathetically pled."
- A. All the world's a stage.
 - B. I wandered lonely, as a cloud.
 - C. The brutal wind bullied the tree.
 - D. And life is too much like a pathless wood.
- ii. Select the option that aptly conveys the poet's point of view with reference to the above extract: (1)
- The roadside stand is put up with the purpose to
- A. display fruits
 - B. to stop the traffic

C. to do business

D. to interact with city people

iii. What do you infer about the people, who put up the roadside stand from the phrase 'would not be fair to say for a dole of bread'? (1)

iv. Complete the following sentence with reference to the extract. (1)

The word **pathetically** reflects the _____ condition of the roadside stand.

v. State whether the following statement is True or False: (1)

By **Flower of Cities**, the poet refers to the garden in cities.

vi. Based on the rhyme scheme, evident in lines 1-4, which word would rhyme with line 2? (1)

— — —
part fled seen

8. Read the following extract and answer the questions that follow:

[4]

"Because we are born into this community, we are never given any honour or dignity or respect; we are stripped of all that. But if we study and make progress, we can throw away these indignities. So study with care, learn all you can. If you are always ahead in your lessons, people will come to you of their own accord and attach themselves to you. Work hard and learn."

i. Who is the speaker? Who is he speaking to?

- a. Appa; Bama
- b. Bama; Amma
- c. Bama; The Zamindar
- d. Annan; Bama

ii. Select the option that best describes the speaker in the above extract:

- I. marginalized
- II. practical
- III. idealistic
- IV. curious
- V. aggressive

Select the most appropriate option:

- a. I and II
- b. III and IV
- c. II and IV
- d. IV and V

- iii. Complete the following statement with reference to the community:
The treatment meted out to the community was _____.
- iv. Which of the following summarizes the author's opinion about study?
- Childhood should be spent in experiential learning.
 - Studying is better than playing.
 - Studying is essential to the nation's development.
 - Studying leads to social reforms and progress.

OR

Hana, working hard on unaccustomed labour, saw a messenger come to the door in official uniform. Her hands went weak and she could not draw her breath. The servants must have told already.

- Why is Hana working hard on unaccustomed labour?
- Why the messenger had come?
 - To arrest Dr. Sadao.
 - To check whether there is enemy or not.
 - To take Dr. Sadao, as General was in pain.
 - To help Hana at work.
- Who is the author of the above-mentioned lines?
 - Anees Jung
 - Alphonse Daudet
 - Pearl S. Buck
 - John Updike
- What turned Hana's hands weak and short of breath?

9. **Read the following extract and answer the questions that follow:**

[6]

For a moment I thought of running away and spending the day out of doors. It was so warm, so bright! The birds were chirping at the edge of the woods; and in the open field back of the sawmill the Prussian soldiers were drilling. It was all much more tempting than the rule for participles, but I had the strength to resist, and hurried off to school.

- Complete the sentence with an appropriate explanation, as per the extract.
The _____ seemed boring to the narrator.
- What were the Prussian soldiers doing?



- a. Drilling in the open field back of the sawmill
 - b. Chirping at the edge of the woods
 - c. Drilling in the open field back of the sand-mill
 - d. Both (i) and (ii)
- iii. On the basis of the extract, choose the correct option with reference to the two statements given below.
- (1) The narrator gave in to the distractions that day.
 - (2) The day offered all possible temptations to the narrator.
- a. (1) Can be inferred from the extract but (2) cannot.
 - b. (1) cannot be inferred from the extract but (2) can.
 - c. (1) is true but (2) is false.
 - d. (2) is the reason for (1).
- iv. Select the suitable word from the extract to complete the following analogy:
Courage: Strength:: Endure: _____
- v. **For a moment I thought of running away and spending the day out of doors.**
Why did he think so?
- a. Because he was late for school
 - b. Because he did not prepare anything for the test
 - c. Because he was afraid of M. Hamel's scolding
 - d. All of these
- vi. Replace the underlined word with its synonym from the extract.
The distractions were alluring to the narrator.

OR

Read the following extract and answer the questions that follow:

In his hand is a steel canister. "I now work in a tea stall down the road," he says, pointing in the distance. "I am paid 800 rupees and all my meals." Does he like the job? I ask. His face, I see, has lost the carefree look. The steel canister seems heavier than the plastic bag he would carry so lightly over his shoulder. The bag was his. The canister belongs to the man who owns the tea shop. Saheb is no longer his own master!

- i. What is Saheb holding while on his way?
 - a. Rag picking bag
 - b. A pair of different colour shoes
 - c. A gold coin



- d. A steel canister
- ii. Identify the textual clue that allows the reader to infer that the new job impacted Saheb. (Clue: a phrase)
- iii. Complete the sentence with an appropriate explanation, as per the extract.
The steel canister seem heavier than the plastic bag he would carry so lightly because _____.
- iv. Replace the underlined word with its antonym from the extract.
Saheb was no longer his own servant now.
- v. On the basis of the extract, choose the correct option with reference to the two statements given below.
(1) Saheb was now having a job and a master.
(2) The author is happy to find that Saheb is now having a full-time job.
a. (1) Can be inferred from the extract but (2) cannot.
b. (1) cannot be inferred from the extract but (2) can.
c. (1) is true but (2) is false.
d. (2) is the reason for (1).
- vi. When the author met Saheb the second time, Saheb was:
a. wearing tennis shoes
b. barefoot
c. cheerful
d. wearing uniform

10. **Answer any five of the following questions in 40-50 words each:** [10]
- (i) What happened when 'a big bruiser' tossed Douglas into the YMCA pool? How did Douglas plan to come out? [2]
 - (ii) What does the title of the poem (Keeping Quiet) suggest to you? What do you think the poem is about? [2]
 - (iii) What is suggested by the phrase, 'massive weight of Uncle's wedding band'? [2]
 - (iv) What was the social status of Sophie and Jansie? What were their reactions about their future? [2]
 - (v) What was MRA and why was it welcomed at the Gemini Studios? [2]
 - (vi) Did Umberto Eco consider himself a novelist first or an academic scholar? [2]



11. Answer any two of the following questions in 40-50 words each: [4]

(i) What makes the author say, **The world's geological history is trapped in Antarctica?** (A Journey to the End of the Earth) [2]

(ii) How did the Tiger King's marriage bring him closer to his target? [2]

(iii) With students of ice, he offers future generation of policy makers a life-changing experience... [2]

What expectation of the narrator is reflected in the above line? (The Journey to the End of the Earth)

12. Imagine you are Elda of The Rattrap. [5]

What advice might you offer to Sophie in 'Going Places', in the context of her escapist nature to persuade her to accept the reality of life?

Pen down your advice, in a letter to Sophie.

You may begin this way:

Dear Sophie

Last evening, I saw you near the canal waiting for Danny Casey...

You may end this way:

I hope this advice is helpful to you. Please let me know if there is anything else I can do to support you.

Warmly,

Edla

OR

After reading Keat's A Thing of Beauty Sneha deduced that all the things that take away all the sorrow that surrounds us from time to time can be a thing of beauty.

Today while explaining Frost's **A Roadside Stand**, the teacher said: "...that even seemingly insignificant things, like a tiny fruit shop, can have profound beauty and significance."

She is confused as to how can a shabby **roadside stand** be considered a thing of beauty. Sneha discusses this with her father, an army personnel posted in the hills, over the phone but he was unable to convince her. As her father compose a letter (in 200 words), explaining his thoughts on the concept of beauty and consequently validating what the teacher taught. Support your response with reference to both poems.

You may begin this way:

Dear Sneha

I appreciate your inquisitiveness that how could a shabby shop referred to in the poem,



A Roadside Stand, which you read recently could be a thing of beauty...

You may end this way:

Although I wish to explain this in person, I have no better option than to explain you through this letter. I hope this explanation would be helpful to you. Please let me know if you still have doubts.

Warmly,

13. Mr. Lamb had a positive impact on Derry's life. His meeting with Mr. Lamb transforms him from a scared child to a confident boy. Write a diary entry as Derry highlighting the qualities and attitudes that brought such changes in his personality. [5]

You may begin like this:

The brief association that I had with Mr. Lamb has changed me...

OR

In the story, **The Enemy**, Dr. Sadao faced a dilemma. In an attempt to delineate how he was both a patriotic Japanese as well as a dedicated surgeon, Hana, his wife expresses her thoughts in a diary entry. Create this diary entry as Hana.

You may begin:

I have been married to Sadao for many years now after falling in love with him in America and I have always known him to be a man of great intelligence with a complex emotional character. However, the state of dilemma that he faced because of the enemy American POW...



Solution
SAMPLE QUESTION PAPER - 4
English Core (301)
Class XII (2024-25)

SECTION A – READING SKILLS

1.
 - i. (b) were not aware of different forms of coffee.
 - ii. The writer's reference to the coffee plant is simultaneously hilarious and sarcastic. By referring to plants as organisms with thought and showing coffee-drinkers as "pests", the author has successfully gained a few laughs from the audience.
 - iii. The author refers humans as a great threat to coffee plants because the chemical that the plants had originally produced to ward off pests, is the same chemical that humans call coffee and chug happily. So, in the end, the real "threat" to the plants came not from the pests, but from humans, who mass-manufactured plants for coffee.
 - iv. (d) stimulants
 - v. the characteristic taste and aroma of the coffee bean
 - vi. The writer does an excellent job of describing the interesting phenomenon of the green bean turning into a flavorful coffee bean. They explain that when the bean is exposed to heat, the fats and carbohydrates turn into essential oils, which give the characteristic flavor and aroma to the coffee bean. They also touch on the importance of uniform grinding so that all particles are of similar sizes in order to ensure equal extraction. This is a great explanation and well-referenced to the process of making coffee.
 - vii. One method to get stronger coffee is to use more coffee powder. This will ensure that the water has enough time to extract all the flavours from the coffee beans, giving you a stronger cup of coffee.
 - viii. (b) Less surface area makes extraction easier.
 - ix. The right degree of extraction of coffee is important because it will determine the flavor, aroma and overall taste of the coffee. If the extraction is done incorrectly, the coffee will either taste sour and under-extracted or bitter and over-extracted. The right degree of extraction requires precise control over the amount of coffee and the time it is exposed to water. Only then can you create the perfectly balanced cup of coffee.
 - x. The coffee plant's production of caffeine intended to keep pests away but instead attracted a greater threat: human beings, who became drawn to the plant for its stimulating effects.
2.
 - i. Not Given - There is no information on this
 - ii. No, the given information is not correct.
Indian garbage has a low calorific content of about 800 cal/kg because it has high moisture and requires additional fuel to burn.
 - iii. (ii) 2 and 3



- iv. Dioxin, an organochlorine, belonging to the family of Persistent Organic Pollutants (POPs) is released on burning plastic waste which causes cancer. The risk of getting cancer from dioxin is ten times higher than reported by the agency in 1994.
- v. d. 2 and 4
- vi. Converting garbage into energy to produce 25 megawatts of power and swallow 1,000 tonnes of garbage every day.
- vii. b. Hydrochloric acid
- viii. reproductive problems

SECTION B – CREATIVE WRITING SKILLS

Literary Club

ST. THOMAS PUBLIC SCHOOL, LUCKNOW

9th July. 2019

NOTICE

INTER-HOUSE COMPETITIONS

The Literary Club is organizing an inter-school debate competition on the occasion of the Silver Jubilee celebrations as per details are given below:

Date: 18th July 2019

Time: 11 a.m. onwards

venue: Saraswati Auditorium

Topic: "Nuclear Armament is India's best defence against cross-border terrorism".

Last date for receipt of name: 13th July up to 4.30 p.m. in the Activities Room.

Rahul/Rashmi

President

3.

OR



Resident Welfare Association

Navi Mumbai

Notice

12 August 2023

Water Supply Disruption

In light of essential pipeline repair and maintenance, residents are informed of a temporary water service suspension from Friday, 18 August, 8:00 a.m., until Sunday, 20 August, 9:00 a.m. Water tankers will be available on R.W.A. premises from 10:00 a.m. to 6:00 p.m. during these days.

Anuj/Anu

Secretary

Saket Kunj

Saket, Navi Mumbai

4. Springdales Public School

Gurgaon

25 Sept 2018

Sh. B.S. Bedi

2/27 Jorbagh

New Delhi

Sir

Sub: For Inaugurating of Cricket Championship

Our school is organizing an inter-school T-20 cricket championship from 2nd Oct. to 8th Oct. 2018 in our school premises. All the Schools of the area are invited to participate.

Your presence in our midst will motivate and inspire all of us You are requested to inaugurate the championship on 2nd Oct. 2018 at 10 a.m. in our school's sports ground and to enlighten all of us with your inspiring words.

We will be glad by your presence. Kindly inform us by 30th Sept. 2018.

Yours faithfully,

Sachin Bansal

Head Boy

OR

Invitation

Dear Classmates,

Join us for the Class XII picnic to the Garden of Five Senses on Saturday, September 23rd, at 10:00 AM. Let's enjoy a day of fun, food, and friendship! Don't miss out on this memorable outing.

See you there!

Best regards,
Rita/Ram
Head girl/boy, Lotus Public School

5. M114, Mall Road
Delhi - 110007
7th February, 20XX
The Editor
The Times of India
Delhi - 110002

Sir

Subject: Concern over the rising noise pollution

Through the esteemed columns of your newspaper, I want to draw the attention of the concerned authorities to the rising noise pollution in our cities.

The noise caused by loudspeakers, marriage processions, DJs during wedding receptions, loud music from religious congregations, election campaigns and other gatherings is harmful. The people who suffer the most from noise are old people, sick people and the students who are preparing for examinations. Moreover, people suffer from hypertension, stress, depression due to lack of adequate sleep. The municipal and other authorities give permission for various functions but the law-enforcing authorities, i.e. the police, must act in unison to ensure that the volume of such noise remains within reasonable limits and must stop altogether after a certain time at night. Heavy fines must be imposed on people who break these rules to deter them in future.

I hope my views will get appropriate space in your newspaper and the concerned authorities will read this letter and take the required action to reduce the noise pollution in the city.

Thanking You,
Yours sincerely,
Karuna

OR

21, Vasant Marg
Bhilai
01 April 2019
The Director
JB Academy, Ayodhya
Dear Sir/Madam

Subject: Application for the post of a post-graduate teacher

In response to your advertisement in 'The Bhilai Express', dated March 25, 2019, for the



post of a postgraduate Political Science teacher in your renowned school, I wish to offer my candidature.

I have done B.Ed. I am an MA in English with 1st division. I have achieved many certificates for co-curricular activities in my school and college level. I am a dedicated and industrious person who can adjust in any condition and not let my work hamper in any way. With my knowledge, I will surely be able to add value to your school. I am available for an interview on any day of your convenience. If given a chance to serve you, I assure you that I shall work with utmost sincerity and dedication up to your satisfaction for further growth and fame of the organisation.

Yours faithfully

Sanjana Sharma

Encl. : Bio-data

BIO-DATA

| | |
|---------------------------------|---|
| Name | Sanjay/Sanjana Sharma |
| Father's Name | Mithun Sharma |
| Date of Birth | 25 July 1984 |
| Address | 21, Vasant Marg, Bhilai |
| Phone | 9810085694 |
| E-Mail | sanjsharma@gmail.com |
| Marital Status | Unmarried |
| Age | 28 years |
| Nationality | Indian |
| Professional Experience | (i) Have been working as a PGT political science in Modern School, Bhilai since April 2018 till date. |
| Academic Qualifications | (i) B.ED (ii) M.A. in Political Science (iii) B.An in Political Science |
| Hobbies | Trekking and reading |
| Strengths | Good communication skills, computer literate, proficient in English, Hindi and German |
| Names and Address of References | (i) Mr Vijay Mathur, Principal D.A.V School, Gurudwara Rd. Delhi (ii) Mr Satish Ohri |

6.

Stray Dogs Menace

- Perna

The proliferation of stray dogs in Indian colonies presents a significant threat to public safety and health. Their aggressive behavior has led to numerous attacks on residents. The issue of stray dogs has escalated, causing disruptions and posing risks to residents. Their incessant barking and howling disturb the peace, while their aggressive behavior and propensity to overturn dustbins create chaos and health hazards. Moreover, their scavenging habits contribute to unhygienic conditions and disease spread, posing a threat to public health. Urgent action is imperative. A vaccination program can mitigate disease transmission among strays, while adoption initiatives offer them safe homes. Additionally, efforts to tame and train these dogs could curb their aggressiveness. However, addressing this issue requires collective community action. Collaboration is essential to safeguard both human safety and the well-being of these animals. In conclusion, by taking proactive steps such as sterilization programs, awareness campaigns, and community involvement, we can address the issue of stray dogs in our colony responsibly and compassionately. Let us come together as a community to create a safer and more harmonious environment for both humans and animals alike.

OR

Conserve Water Campaign

by Rohini, School Pupil Leader

Meerut, 26th March, 20XX: Students of Meerut Public School, Meerut participated in a campaign on 23rd March, 20XX. The campaign was organised by various agencies of city with an aim to create awareness among people about conservation of water. The approaching summer and the impending water scarcity were kept in view while organising the campaign. The students formed many groups and visited many places where reports of water shortage were prevalent. They presented many street plays, displayed posters and handed out booklets containing information about the need to conserve water and the methods to do the same.

Various scientific models, which caught the eye of the masses, were presented by the agencies involved. Moreover, the play on the theme of 'Rainwater Harvesting' remained the talk of the town and was hugely appreciated.

The efforts of the students were applauded by the Principal, who also announced that the school will continue to participate in such causes.

SECTION C - LITERATURE

7. i. young trees sprinting



- ii. b. fear of losing her mother
- iii. d. she was dozing
- iv. trees sprinting
- v. To distract or divert herself
- vi. a. anxiety

OR

- i. (C) The brutal wind bullied the tree.
 - ii. (C) to do business.
 - iii. The people who put up the roadside stand are not begging for charity; instead, they are trying to earn a living by selling goods to support themselves.
 - iv. The word 'pathetically' reflects the poor condition of the roadside stand.
 - v. False.
 - vi. Fled.
8. i. option (d). Annan; Bama
- ii. option (a) I and II
 - iii. The treatment meted out to the community was unfair or devoid of honor, dignity, and respect.
 - iv. option (d) Studying leads to social reforms and progress.

OR

- i. Because all the servants had left the job.
 - ii. To take Dr. Sadao, as General was in pain.
 - iii. Pearl S. Buck
 - iv. As Hana saw the messenger, her hands went weak and she was unable to breathe. This was because she felt that the servants must have told the authorities that they were sheltering an enemy.
9. i. rule for participles
- ii. Drilling in the open field back of the sawmill
 - iii. b. (1) cannot be inferred from the extract but (2) can.
 - iv. Resist
 - v. All of these
 - vi. tempting

OR

- i. A steel canister
- ii. lost the carefree look
- iii. The bag which he used to carry belonged to him but now Saheb was no longer his own master.
- iv. master



v. a. (1) Can be inferred from the extract but (2) cannot.

vi. wearing tennis shoes

10. Answer any five of the following questions in 40-50 words each:

- (i) When Douglas was tossed into the pool, he got terribly frightened. He planned to make a big jump when his feet hit the bottom, come to the surface, lie flat on it and paddle to the edge of the pool.
- (ii) The title of the poem suggests the importance of silence. The poem is about the importance of self-examination and introspection. It is also an appeal for universal harmony.
- (iii) The wedding band that the poet is talking about is the wedding ring in her finger which she is still wearing. Its weight lies heavily on Aunt Jennifer's hand suggests that Aunt Jennifer is still overburdened with the duties and responsibilities of her married life and also symbolises the harsh and difficult experiences that she had had during that time.
- (iv) Sophie and Jansie, both belonged to a middle-class family. Sophie was a dreamer and lived in a fantasy world. She wanted to open a boutique though it was not within her reach. Sophie also thought of becoming an actress or a fashion designer. Jansie was a practical girl and knew her shortcomings. She was aware that the best work they would get was in the biscuit factory.
- (v) The MRA, the Moral Rearmament Army, was a kind of counter-movement to international communism. They were welcomed at the Gemini Studios due to their political affiliations. The big boss of the studio, Mr. Vasan literally played into their hands. Also, people at the Gemini Studios were averse to communism. So the Moral Rearmament Army could not have found a better host in India than the Gemini Studios, who welcomed them warmly.
- (vi) Umberto Eco is a writer whose narrative is creative and appealing both to adults as well as children. He considers himself an academic scholar first and then a novelist. He participates in academic conferences and not meetings of writers and pen clubs. He considers himself as a university professor who writes novels on Sundays.

11. Answer any two of the following questions in 40-50 words each:

- (i) The world's geological history is trapped in Antarctica. This is because the modern world is battling with an increasing population and excessive burning of fossil fuels has created a blanket of carbon dioxide around the world which is increasing the average global temperature. The concretization of land has worsened the situation. But Antarctica is relatively untouched in this respect since it has never had a human population. Antarctica is a crucial element in the debate on climate change because it is relatively 'pristine'. More importantly, it holds in its ice-cores half-a million-year-old



carbon records, trapped in its layers of ice. It embodies all that is prehistory: cordilleran folds, pre-Cambrian granite shields, ozone, and carbon; evolution and extinction.

Hence, to study and examine the earth's past, present, and future, Antarctica is the best place to go. These are the factors that make Antarctica very important, geologically.

- (ii) The Tiger King's father-in-law had a large tiger population in his forests. Maharaja Jung Jung Bahadur killed five or six tigers each time he visited his father-in-law. In this manner, the number of killed tigers reached ninety-nine from seventy.
- (iii) In "The Journey to the End of the Earth" by Tishani Doshi, the narrator's expectation reflected in the line "With students of ice, he offers future generation of policy makers a life-changing experience" is that the young participants of the "Students on Ice" program will gain a profound understanding of the Earth's environment and the impact of climate change. By experiencing the pristine and fragile ecosystem of Antarctica firsthand, these future policymakers are expected to develop a deep appreciation for the planet's ecological balance and be inspired to take informed and effective actions to address environmental issues.

12. Dear Sophie,

Last evening, I saw you near the canal, waiting for Danny Casey. It seems that you have developed an infatuation with him, idolizing him as your escape from reality. I understand that it's natural to have dreams and aspirations, but it's important to accept the reality of life and not get lost in fantasies.

Here is my advice to you:

- **Embrace the present:** Instead of constantly daydreaming about a future with Danny Casey, try to focus on the present moment. Appreciate the beauty around you, the relationships you have, and the opportunities that come your way. Life is happening right now, and it's important to make the most of it.
- **Set realistic goals:** It's great to have dreams and ambitions, but it's equally important to set realistic goals that you can work towards. Instead of fixating on a relationship with Danny Casey, think about what you can do to improve yourself, pursue your passions, and achieve personal growth. This will give you a sense of purpose and fulfillment.
- **Face challenges head-on:** Escaping from reality may provide temporary relief, but it won't solve your problems or help you grow as an individual. Instead of running away from challenges, face them head-on. Embrace the difficulties and learn from them. This will make you stronger and more resilient in the long run.
- **Surround yourself with positive influences:** It's important to surround yourself with people who support and encourage your personal growth. Seek out friends and

mentors who inspire you to be the best version of yourself. Their guidance and perspective can help you navigate through life's challenges and keep you grounded.

- **Practice self-reflection:** Take time to reflect on your thoughts, emotions, and actions. Understand why you feel the need to escape from reality and explore healthier coping mechanisms. Engage in activities that bring you joy, help you relax, and promote self-care. This will help you find balance and contentment in your everyday life.

I hope this advice is helpful to you. Remember, life is a journey, and it's important to embrace both the ups and downs. Please let me know if there is anything else I can do to support you.

Warmly,

Edla

OR

Dear Sneha,

I appreciate your inquisitiveness about how a shabby shop referred to in the poem "A Roadside Stand" could be considered a thing of beauty. I understand that you are confused about the concept of beauty and how it can be found in seemingly insignificant things. Let me try to explain my thoughts on this.

Beauty is not just about the external appearance of things. It is also about the emotions and feelings that they evoke in us. In Keats' poem "A Thing of Beauty," he talks about how beauty has the power to take away our sorrows and provide us with a sense of peace and tranquility. Similarly, in Frost's poem "A Roadside Stand," the seemingly insignificant fruit shop may not be beautiful in the traditional sense, but it has a profound significance. The fruit shop represents the hopes and dreams of the poor people who run it. It gives them hope that the city folk have stopped by to buy something from their roadside stand and that they will receive some city money.

The beauty of the fruit shop lies in the fact that it represents the resilience and determination of the people who run it. It is a symbol of their hard work and perseverance in the face of adversity.

In essence, beauty is not just about the external appearance of things. It is about the emotions and feelings that they evoke in us. The fruit shop may not be beautiful in the traditional sense, but it is beautiful in the way that it represents the hopes and dreams of the people who run it.

I hope this explanation helps you understand the concept of beauty better. Remember that beauty can be found in the most unexpected places, and it is up to us to recognize it.

Although I wish to explain this in person, I have no better option than to explain it to you through this letter. I hope this explanation would be helpful to you. Please let me know if you still have doubts.



Warmly,

Dad

13. The brief association that I had with Mr. Lamb has changed me from a bitter, pessimistic, and complex-ridden boy to a mature and confident person. The interactions I had with him had a deep impact on me as my attitude towards life began to transform. Mr. Lamb's unfailing optimism and unending enthusiasm encouraged me. The conversation with him about everything and everybody being essentially the same, his notion of beauty being relative, his talk about pretty girls and love, his concept of the world and friendship, and the incident of the timid man, all fascinated and inspired me. Gradually, I was able to shed my old self and rediscovered my life. I was able to experience the joy of little things of life like raindrops falling pitter-patter on the roof. Thus, my brief association with Mr. Lamb became a turning point in my life as it helped me to come out of my shell. I came across all the qualities and attitudes that were required to bring such changes to my personality.

OR

I have been married to Sadao for many years now after falling in love with him in America and I have always known him to be a man of great intelligence with a complex emotional character. However, the state of dilemma that he faced because of the enemy American POW torn him between his loyalty to his country and his humanistic values. He was confused about whether he should follow his professional ethics and save the prisoner from dying or show his true patriotism and hand him over to the police. But I can say proudly that he rose above narrow prejudices and realised his duty as a doctor. I could sense that the surgeon in him instinctively inspired him to operate upon the dying soldier and save his life. Also, as a responsible and patriotic citizen, he informed a senior Japanese Army General about the prisoner's presence in the house and even agreed to have him killed by the General's assassins. But when the General's men didn't turn up, he arranged for a safe escape of the prisoner, which reinforced my belief of him being a great compassionate soul.

